

Technical Datasheets



R&M FM Global Outlet

FM Global Outlet

These outlets are designed for flush installation on walls or ducts. The outlets accommodate cover frames and duct covers with ± 70 mm or ± 70 mm cut outs. The mounting plate supplied with each outlet kit allows installation on back boxes and floor box connection module holders with ± 60 mm mounting track.

Recommended depth for backboxes and floorboxes > 70 mm.

Standard:

IEC 60603-7: Electrical Characteristics for Telecommunication Outlet

In-House Testing after Standard

IEC 60068-2-2: Dry warm for outlet

IEC 60068-2-1: Cold

In General

Material: PC+ABS

Colour: White/ RAL9010

Beige/ RAL1013

Measure

Width: 88 mm

Length: 88 mm

Technical Datas

Environment temperature -10°C...80°C

Results

Press out force: 87.28 N = 8.9 Kg

Matching Modules

Connection Modules Cat.5e s/u, Cat.6 s/u

R-Numbers: R925370/ R925371 /R304325/ R304326/ R302372/ R302373/ R304327/ R304328

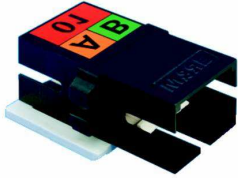


Technical Datasheets
FM Global Outlet

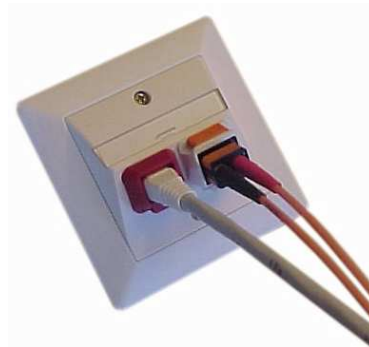
FO Module:
R-Numbers:

SC-RJ; E-2000TM

R308461 /R308459 /R306882/ R306878/ R308889



Matching Accessories R&M Security System



R&M Environment System



Labelling Sheet

R312102

Dimensional Drawing

